



## Dexter Enclosed Shelter

3715 State Highway 80

Pittsville, WI

**Meetings \* Weddings \* Graduations \* Birthdays \* Celebrations \* Memorials**



**Available May 1—October 31**

**CAPACITY = 150 PEOPLE**

**Seats 120 comfortably (10/table)**

**Sat. & Sun. or any full day —\$125, 8am-Mid**

**M-F 1/2 day rate —\$100, 8am-4pm or 4-Mid**

*Partial days must be reserved by calling the office.*

**Holiday Rate: \$150, 8am-Mid**

(1) Refrigerator, (12) 8' picnic tables

Sliding windows and ceiling fans

Serving counter for cookers

Electrical outlets throughout

Large charcoal grill outside

Nearby vault toilets, Playground nearby

Sand volleyball court—bring your own ball



**MAKE YOUR RESERVATION NOW!**

**<https://parksreservations.woodcountywi.gov/parks/>**

**715-421-8422 / [parks@woodcountywi.gov](mailto:parks@woodcountywi.gov)**

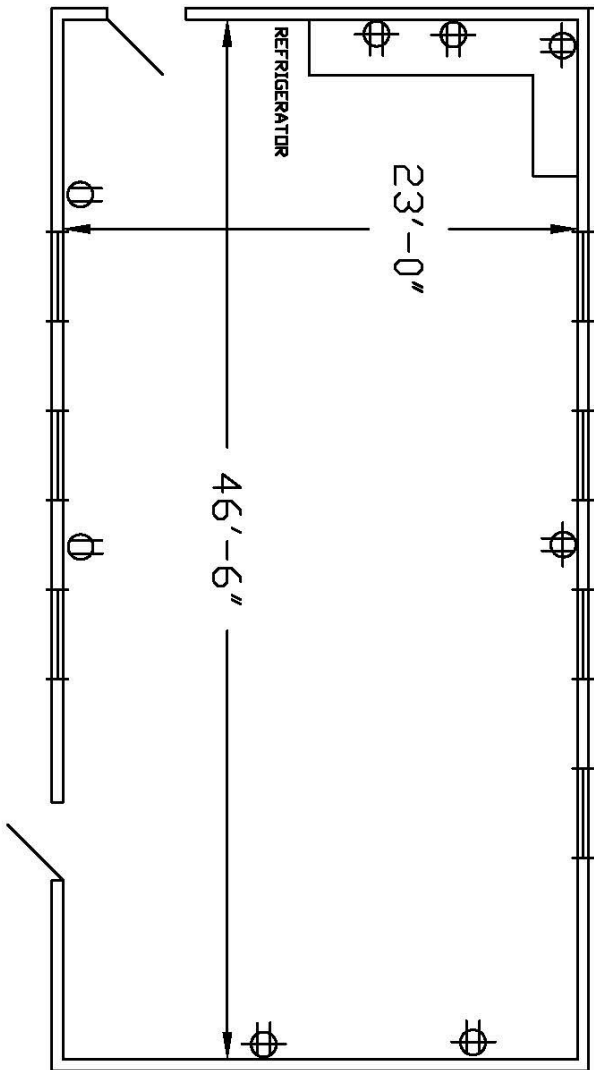
**For more information, see “Shelter Policies & Fees” at**

**<https://www.woodcountywi.gov/Departments/Parks/>**

**or CHECK US OUT ON FACEBOOK!**



# DEXTER SHELTER



⊕ = DUPLEX RECEP.    ⊕ = QUAD RECEP.

Scale  
1/8"=1'  
0' 8'  
Note: If above scale doesn't  
measure 1" in length, then  
drawing scale is incorrect.

# DEXTER ENCLOSED SHELTER

## Cleaning check list

*Basic cleaning supplies are located in the kitchen which includes broom, wipes and garbage bags.*

	Remove all decorations, tape and confetti from walls, ceilings, tables, windows and eye hooks
	Wipe spills from counters, refrigerator, and floors
	Sweep floor
	Replace tables and chairs back to original location
	Place garbage and recyclables from inside and outside of shelter in to the appropriate containers in the parking lot. Replace Bags
	Extinguish fire in the grill
	Take all food and personal items with you
	Turn water faucets off that are located on the outside of the shelter
	Close all windows and doors
	Turn off lights and lock the door

**\*FAILURE TO COMPLY WITH THE ABOVE WILL SUBJECT THE USER TO BE BILLED FOR THE COST OF LABOR AND/OR REPAIRS**

Please let us know if you have any questions, concerns or comments by sending us an email to [parks@woodcountywi.gov](mailto:parks@woodcountywi.gov).

**Would you like to reserve this shelter again? You may do so up to ONE YEAR in advance.**

**Scan the QR code to be taken directly to the reservation system.**

**<https://parksreservations.woodcountywi.gov/parks/>**

